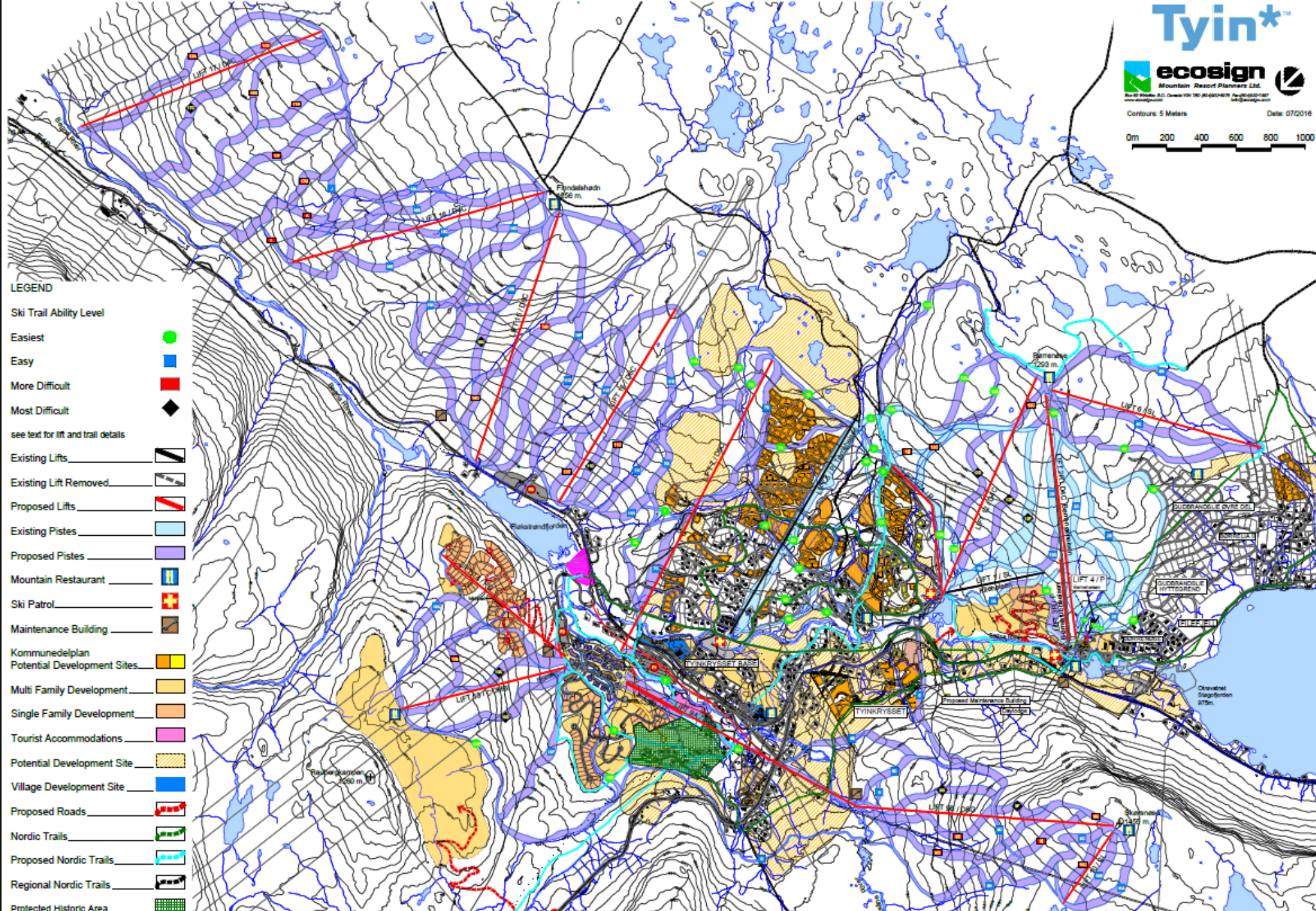




Status planarbeid Tyin-Filefjell

Filefjellkonferansen





LEGEND

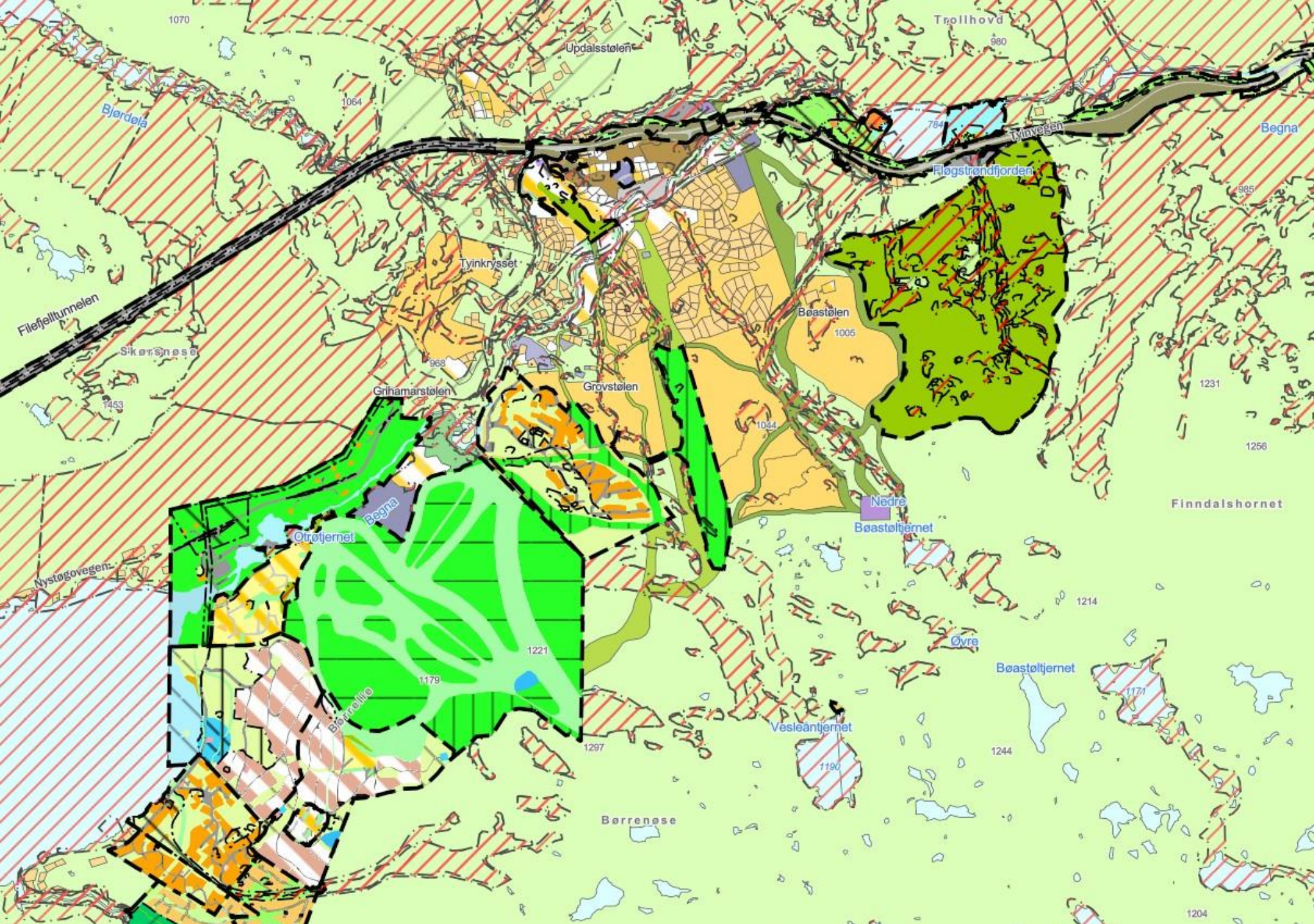
- Ski Trail Ability Level
 - Easiest
 - Easy
 - More Difficult
 - Most Difficult
- see text for lift and trail details
- Existing Lifts
- Existing Lift Removed
- Proposed Lifts
- Existing Pistes
- Proposed Pistes
- Mountain Restaurant
- Ski Patrol
- Maintenance Building
- Kommunedelplan
 - Potential Development Sites
 - Multi Family Development
 - Single Family Development
 - Tourist Accommodations
 - Potential Development Site
 - Village Development Site
- Proposed Roads
- Nordic Trails
- Proposed Nordic Trails
- Regional Nordic Trails
- Protected Historic Area

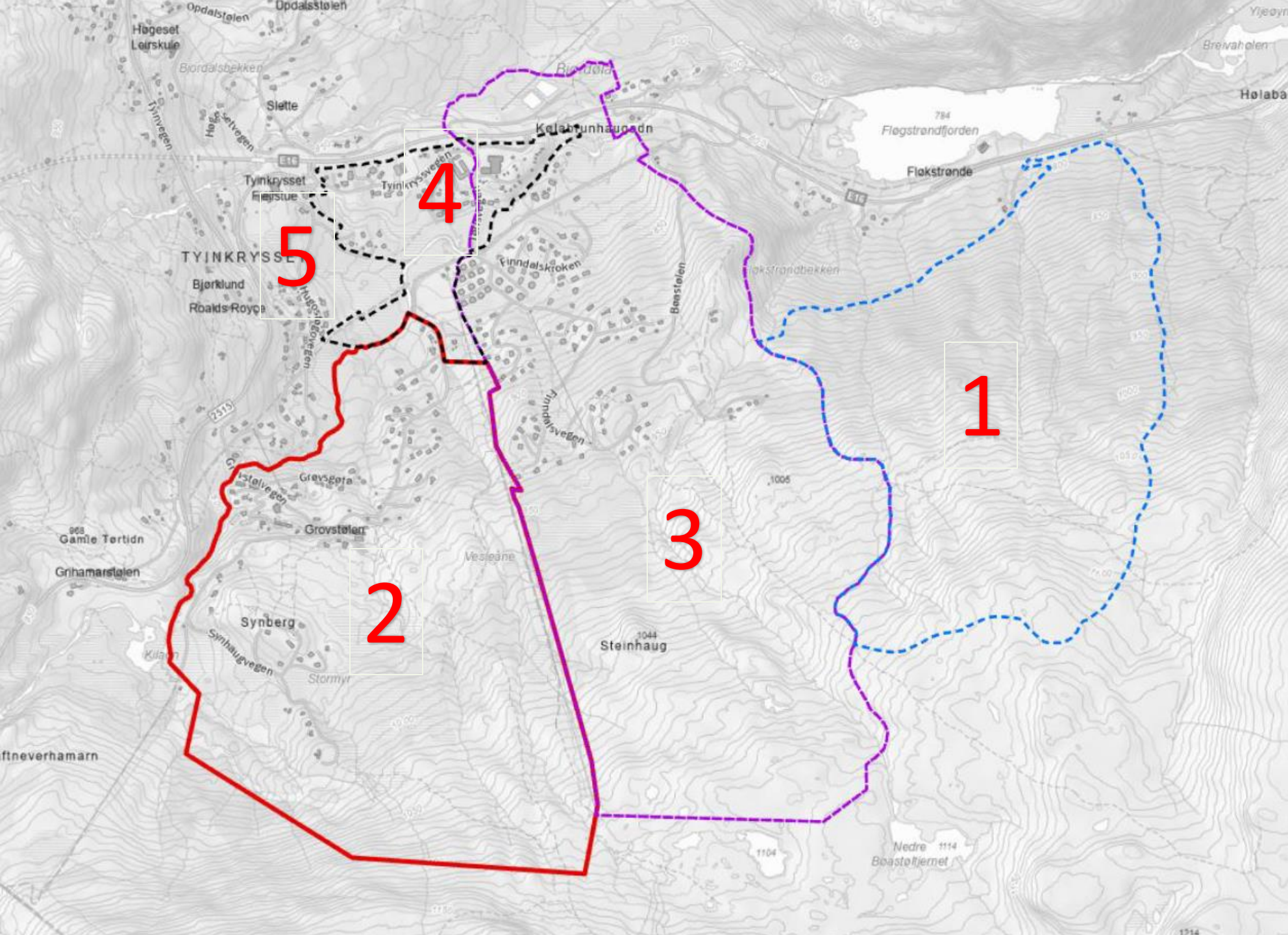


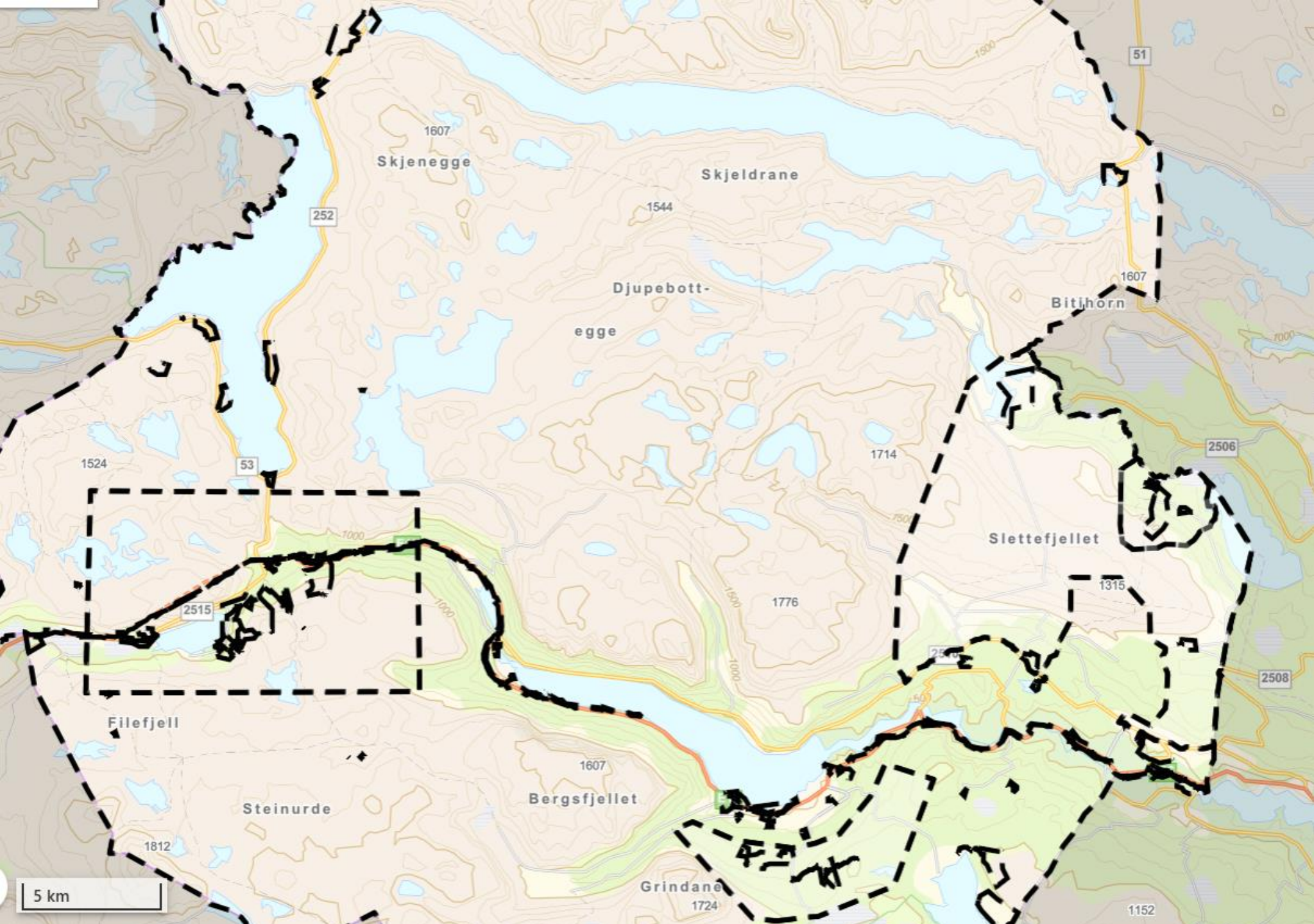
**TABLE IV
TYIN-FILEFJELL
MASTER PLAN DEVELOPMENT SUMMARY**

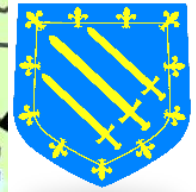
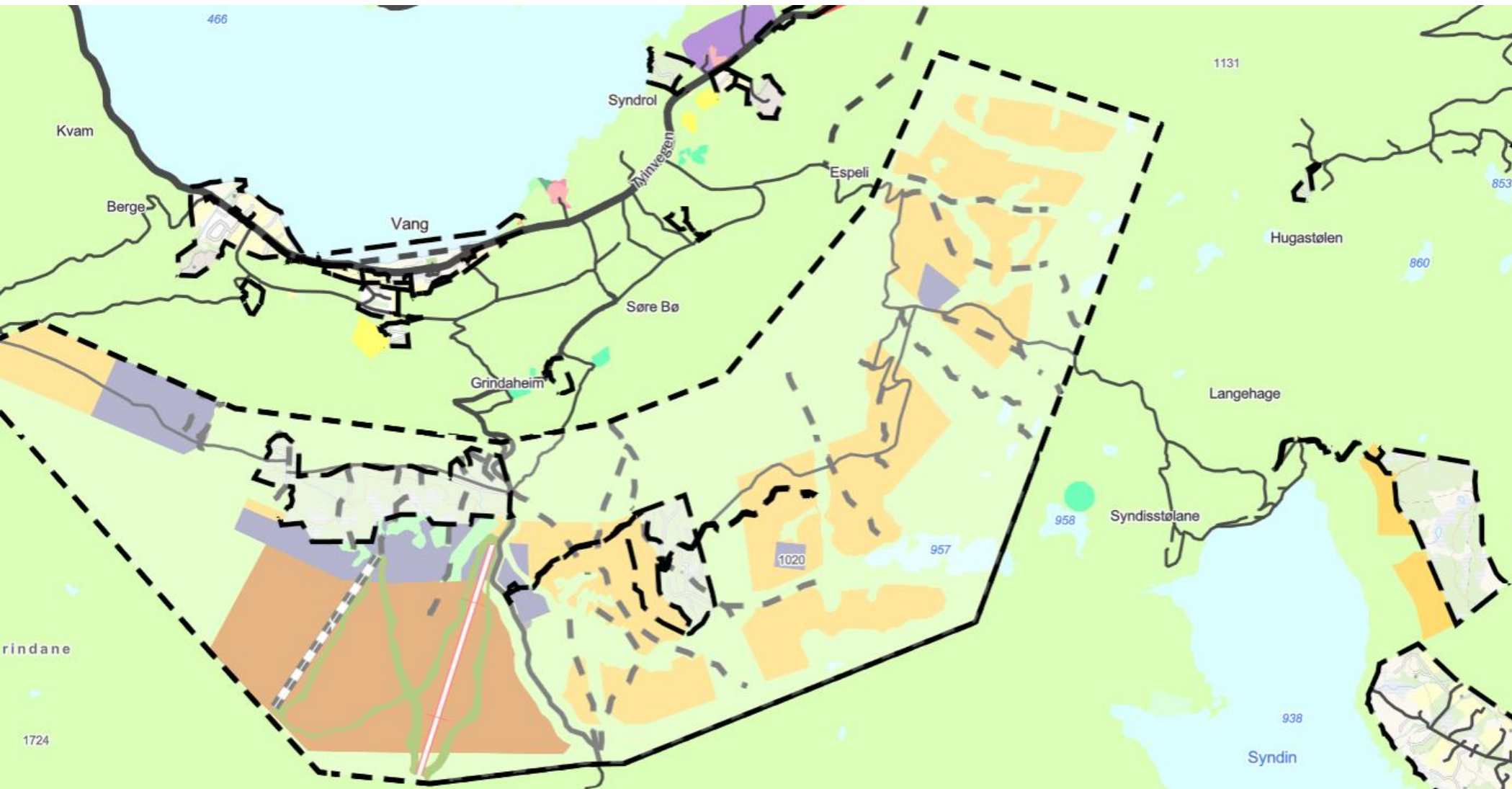
Phase	Lifts	SCC	Pistes	Balance	Grooming and Maintenance	Base Area Capacity				
						Parking	Skiers	Accommodation	Transit	
1	Existing Lifts: Lift 1 Kileheisen SL - 1,440 pph Lift 2 Borrenosheisen SL - 1,440 pph Lift 3 Borrestubbeisen P - 720 pph Lift 4 Barneheisen P - 600 pph Lift 5 Torrisheisen P - 600 pph New Lifts: Lift 7 Anistor D6C - 2,600 pph Lift 8A MC - 1,200 pph Lift 8B P - 600 pph Lift 9A D8G - 2,800 pph Lift 9B D8G - 2,800 pph	6,080	Existing Pistes: 48.1 ha New Pistes: 65.8 ha Total Pistes: 113.9 ha		New: Standard Grooming Machines 6 Terrain Park Grooming Machine 1 Winch Grooming Machines 1 Total Machines 8 Maintenance Facilities: Borrenose & Lift 9 mid 10 bays 1,120 sq. m.	Existing Parking: 2.3 ha, 1,985	1,985	Existing : 4,442 Beds	1,680	3,665
						New Parking: 1.5 ha, 1,318 (Temp. Village P. and P1)	1,318	New : 2,225 Beds	1,035	2,353
						Total Parking: 3.8 ha, 3,303	3,303	Total : 6,667 Beds	2,715	6,018
						Transit: 70	70			70
						Total Day Skier Parking Capacity 3,373	3,373	Total Base Capacity Phase 1		6,088
2	Lifts from Previous Phase: Lift 1 Kileheisen SL - 1,440 pph Lift 2 Borrenosheisen SL - 1,440 pph Lift 3R Borrestubbeisen P - 720 pph Lift 4 Barneheisen P - 600 pph Lift 5 Torrisheisen P - 600 pph Lift 7 Anistor D6C - 2,600 pph Lift 8A MC - 1,200 pph Lift 8B P - 600 pph Lift 9A D8G - 2,800 pph Lift 9B D8G - 2,800 pph New Lifts: Lift 10 SL - 1,440 pph Lift 11 D6C - 2,600 pph Lift 12 D4C - 2,400 pph Lift 13 COMBI - 2160 pph	9,850	Existing Pistes: 113.9 ha New Pistes: 69.2 ha Total Pistes: 183.1 ha		New: Standard Grooming Machines 2 Total Required for Phase 2: Total Standard Machines 8 Total Winch Machine 1 Total Park Machines 1 Total Machines 10 Maintenance Facilities: Base of 13 2 bays 230 sq. m.	Existing Parking: 2.7 ha, 2,343 (minus removed Temp. Village Parking)	2,343	Existing : 6,667 Beds	2,715	5,128
						New Parking: 2.5 ha, 2,245 (Lift 11 parking - 33%) (Finished P1 and P2)	2,245	New : 5,353 Beds	2,454	4,699
						Total Parking: 5.3 ha, 4,588	4,588	Total : 12,020 Beds	5,169	9,757
						Transit: 80	80			80
						Total Day Skier Parking Capacity 4,668	4,668	Total Base Area Capacity Phase 2		9,837
3	Lifts from Previous Phase: Lift 1 Kileheisen SL - 1,440 pph Lift 3R Borrestubbeisen P - 720 pph Lift 4 Barneheisen P - 600 pph Lift 5 Torrisheisen P - 600 pph Lift 7 Anistor D6C - 3,200 pph Lift 8A MC - 1,200 pph Lift 8B P - 600 pph Lift 9A D8G - 2,800 pph Lift 9B D8G - 2,800 pph Lift 10 SL - 1,440 pph Lift 11 D6C - 3,200 pph Lift 12 D4C - 2,400 pph Lift 13 COMBI - 2160 pph New Lifts: Lift 2R Borrenosheisen D6C - 2,600 pph Lift 6 Borrenosheisen SL - 1,200 pph Lift 14 Pulse Gondola for Real Estate	11,800	Existing Pistes: 183.1 ha New Pistes: 15.1 ha Total Pistes: 198.2 ha		New: Standard Grooming Machines 1 Total Required for Phase 3: Total Standard Machines 9 Total Winch Machine 1 Total Park Machines 1 Total Machines 11 Maintenance Facilities: Borrenose expansion 2 bays 230 sq. m.	Existing Parking: 5.3 ha, 4,588	4,588	Existing : 12,020 Beds	5,169	9,757
						New Parking: - ha	-	New : 4,657 Beds	1,983	1,983
						Total Parking: 5.3 ha, 4,588	4,588	Total : 16,677 Beds	7,152	11,740
						Transit: 80	80			80
						Total Day Skier Parking Capacity 4,668	4,668	Total Base Area Capacity Phase 3		11,820
4	Lifts from Previous Phase: Lift 1 Kileheisen SL - 1,440 pph Lift 2R Borrenosheisen D6C - 2,600 pph Lift 3 Borrestubbeisen P - 720 pph Lift 4 Barneheisen P - 600 pph Lift 5 Torrisheisen P - 600 pph Lift 6 Borrenosheisen SL - 1,200 pph Lift 7 Anistor D6C - 3,200 pph Lift 8A MC - 1,200 pph Lift 8B P - 600 pph Lift 9A D8G - 2,800 pph Lift 9B D8G - 2,800 pph Lift 10 SL - 1,440 pph Lift 11 D6C - 3,200 pph Lift 12 D4C - 2,400 pph Lift 13 COMBI - 2160 pph Lift 14 Pulse Gondola for Real Estate New Lifts: Lift 15 D6C - 3,200 pph Lift 16 D4C - 2,400 pph Lift 17 D4C - 2,400 pph	15,900	Existing Pistes: 198.2 ha New Pistes: 94.6 ha Total Pistes: 292.8 ha		New: Standard Grooming Machines 4 Winch Grooming Machines 1 Total Required for Phase 4: Total Standard Machines 13 Total Winch Machine 2 Total Park Machines 1 Total Machines 16 Maintenance Facilities: Bottom of Lift 15 6 bays 680 sq. m.	Existing Parking: 5.3 ha, 4,588	4,588	Existing : 16,677 Beds	7,152	11,740
						New Parking: 1.5 ha, 1,278 (Completed Lift 11/15 Base)	1,278	New : 8,359 Beds	2,874	4,152
						Total Parking: 6.7 ha, 5,866	5,866	Total : 25,036 Beds	10,026	15,892
						Transit: 80	80			80
						Total Day Skier Parking Capacity 5,946	5,946	Total Base Area Capacity Phase 4		15,972

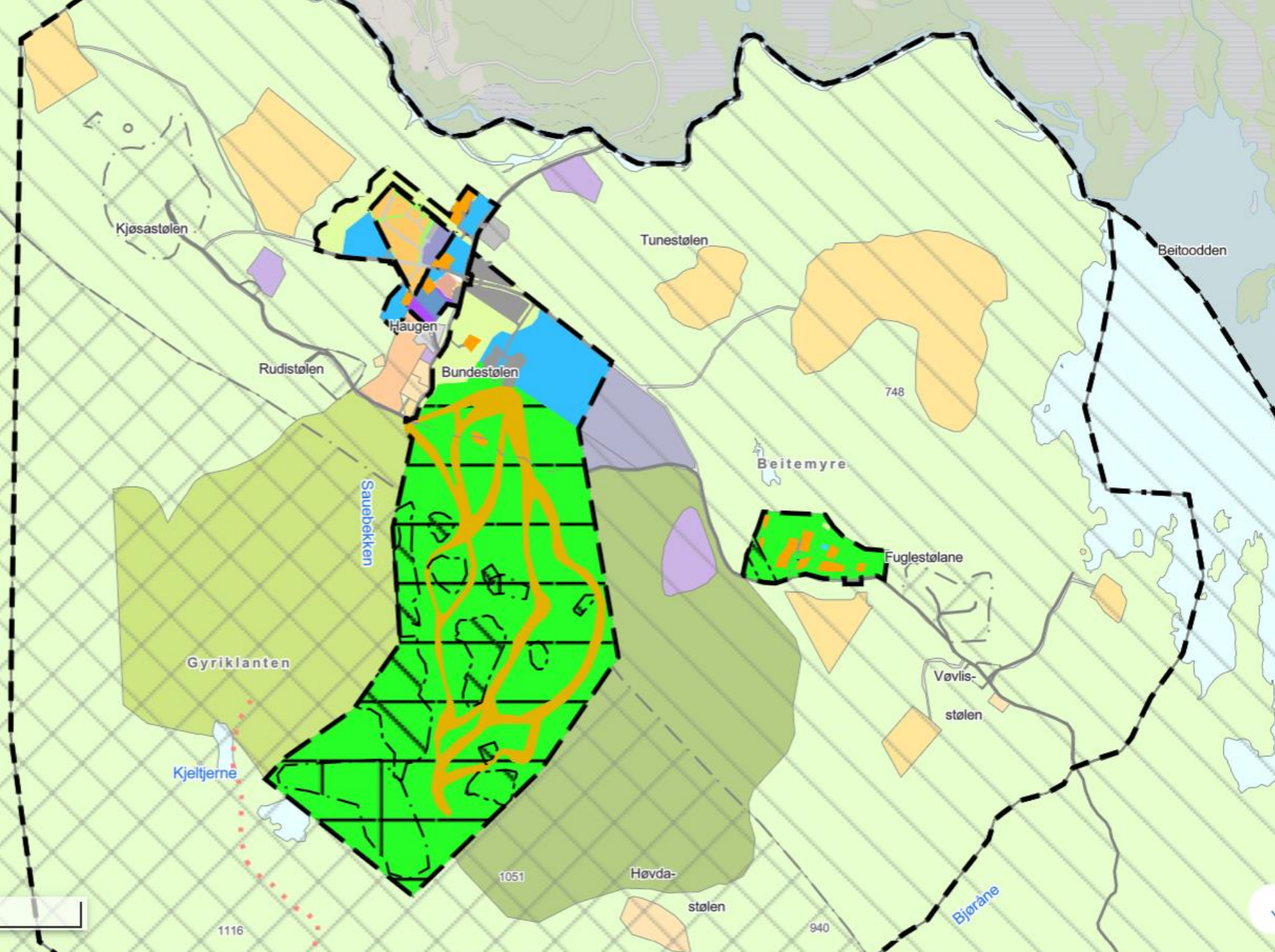


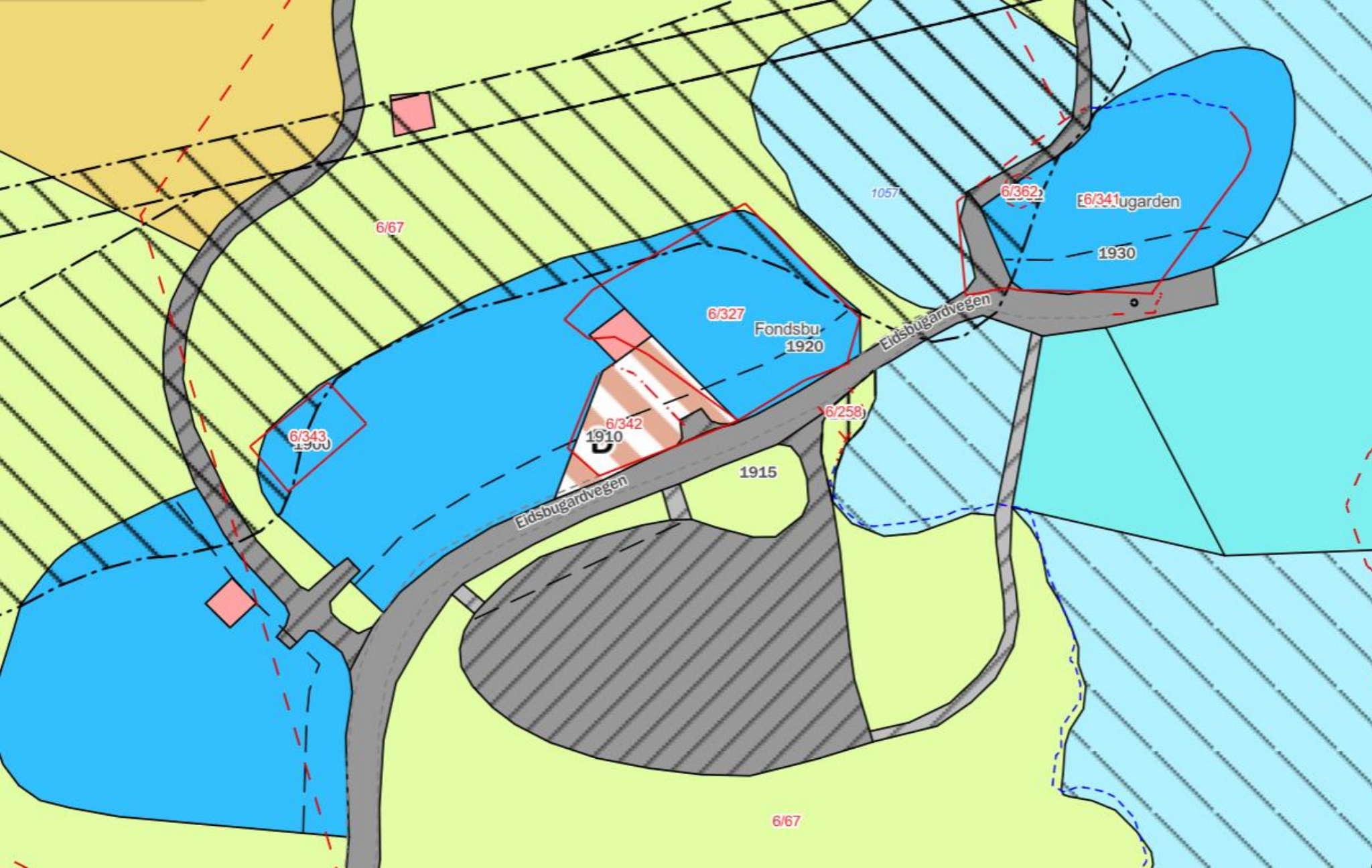


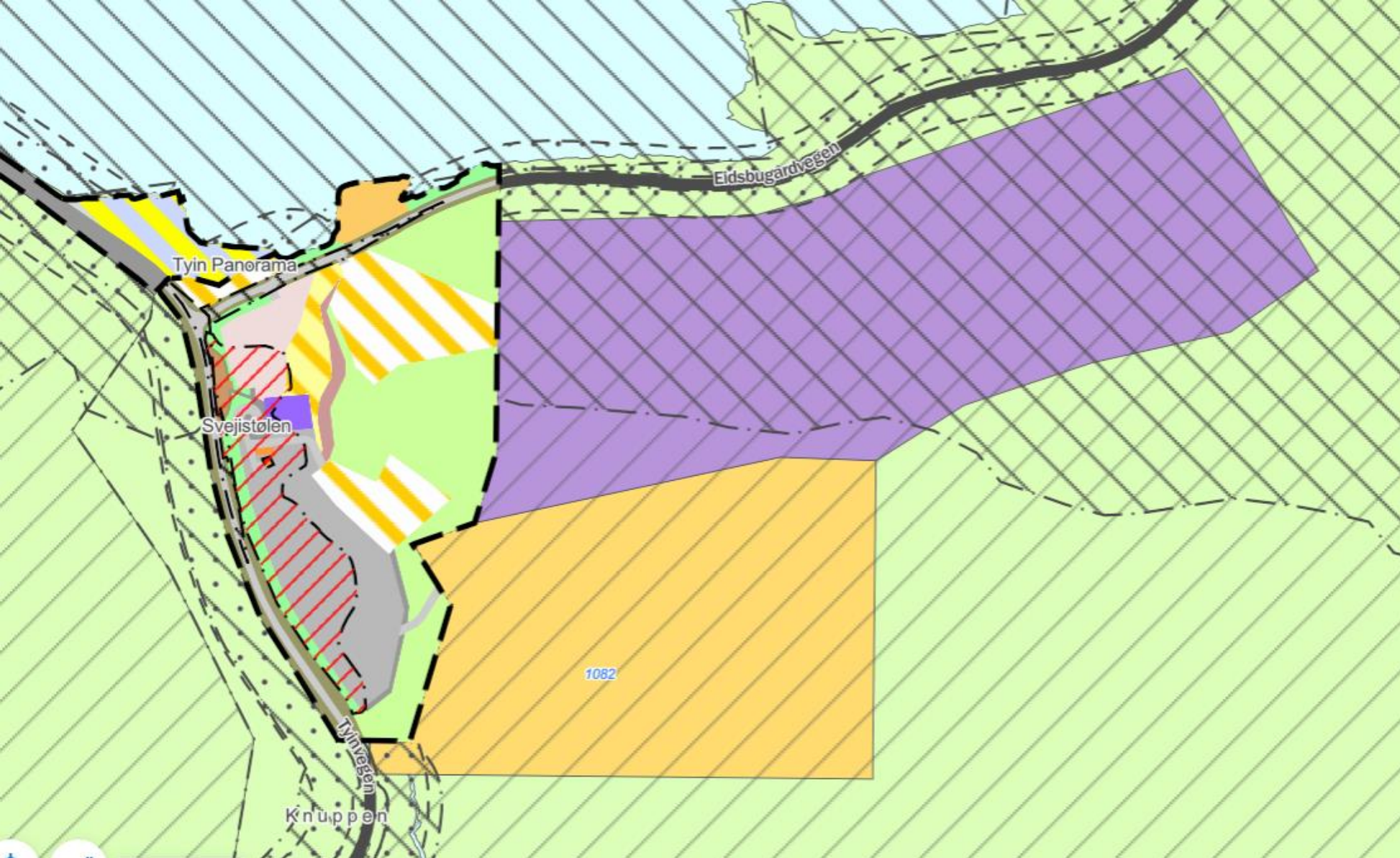


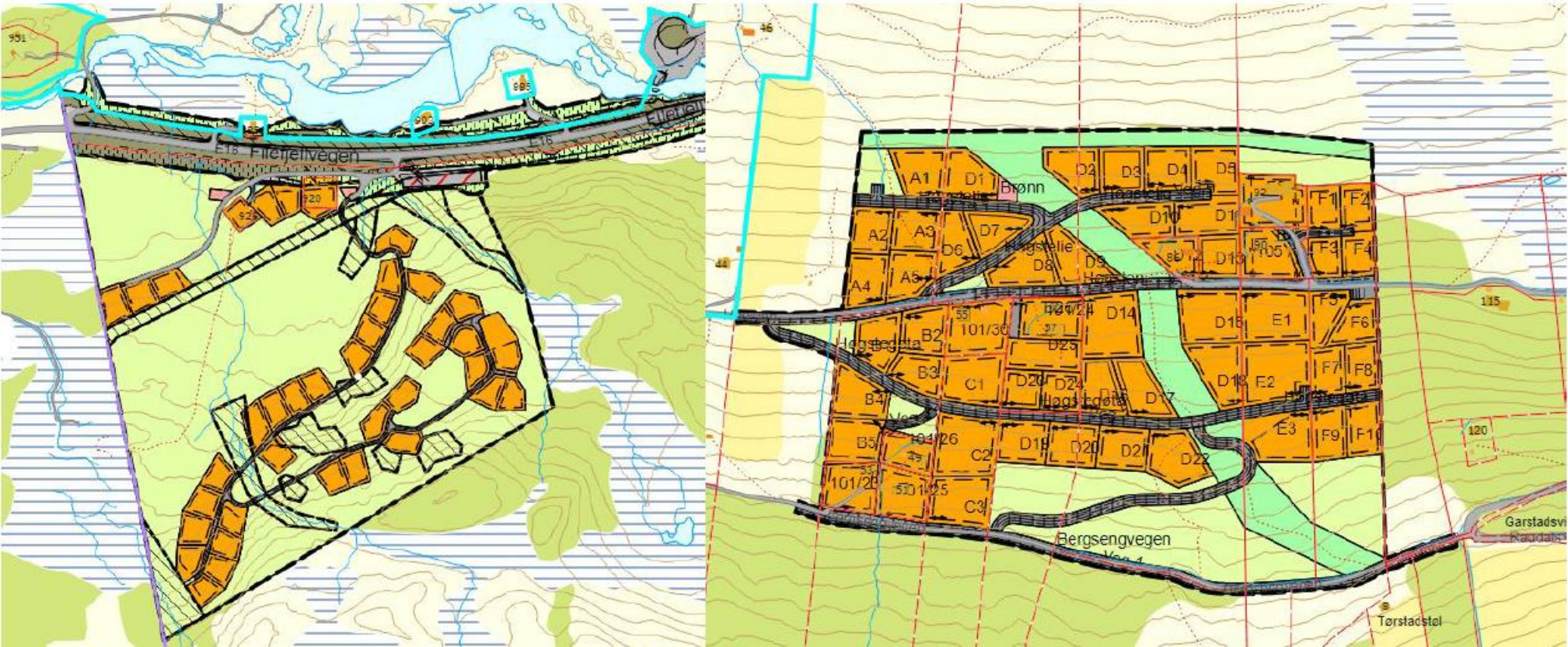














Innspel til arealbruk i KPA

Grovsiling

Prioritert

må konsekvensutgreiast

Innspelet blir med heilt eller delvis

Konsekvensutgreinga visar ikkje eigna

Ikkje prioritert

Kan vurderast i neste rullering av KPA

Koordinering med andre prosessar i kommunen

